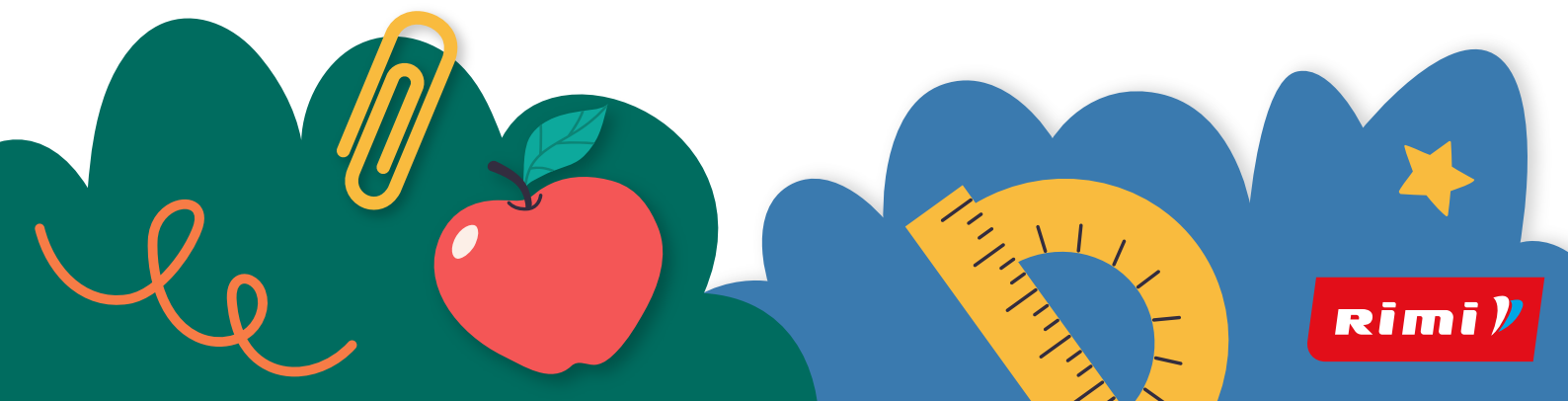
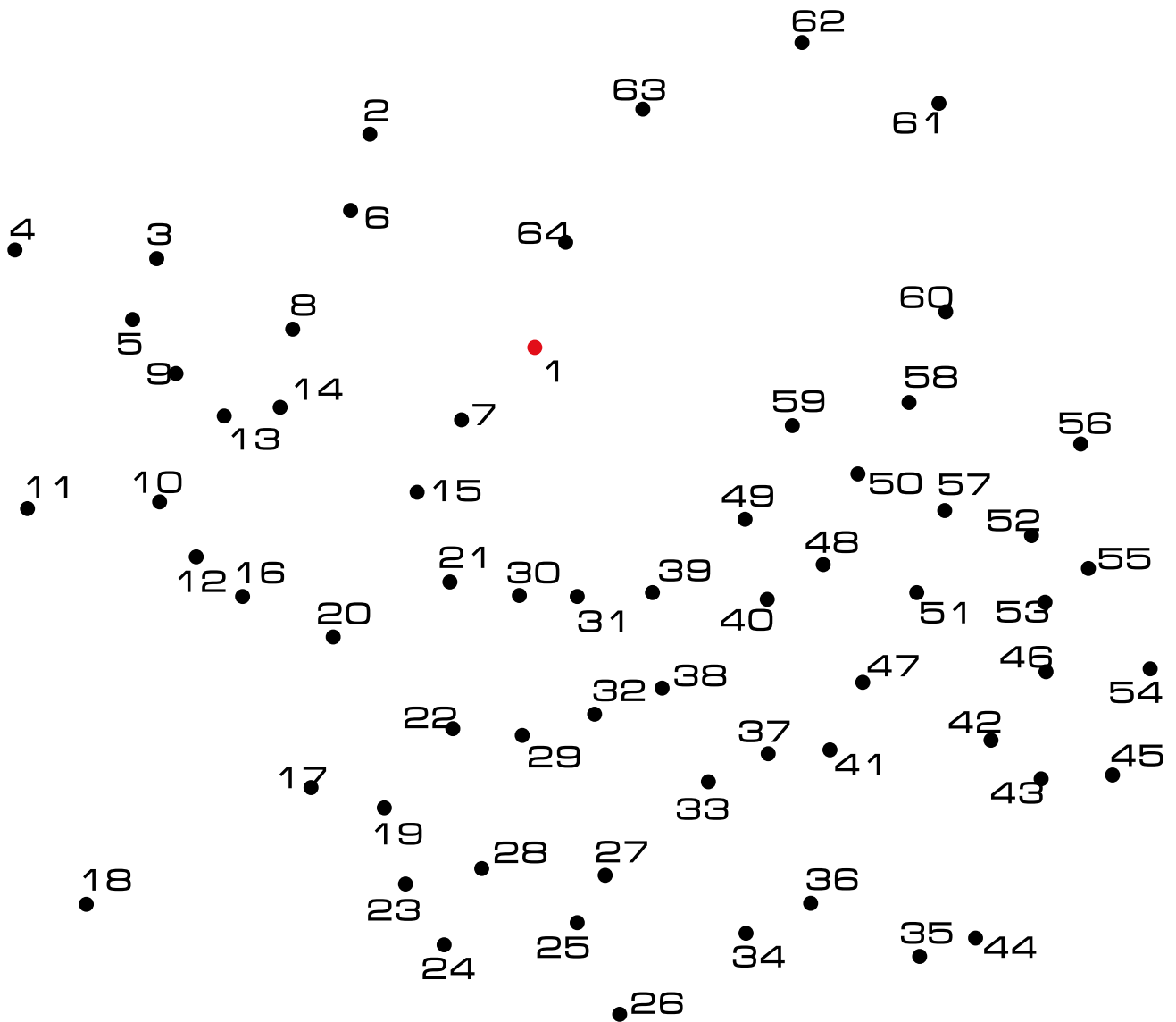




# RUDENĖLIO

užduočių knygelė

# Sujunk taškus

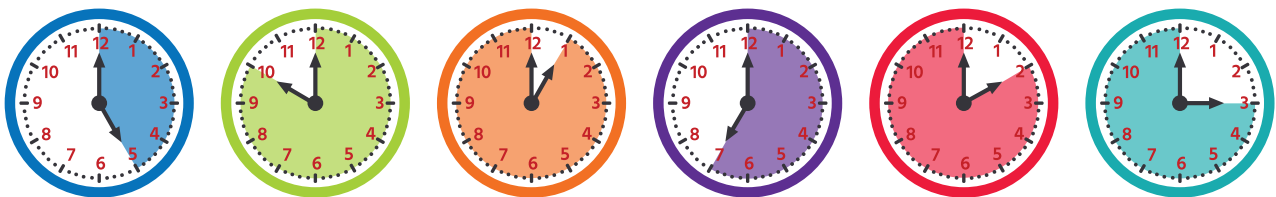


# Kurių skaičių suma lygi 10?

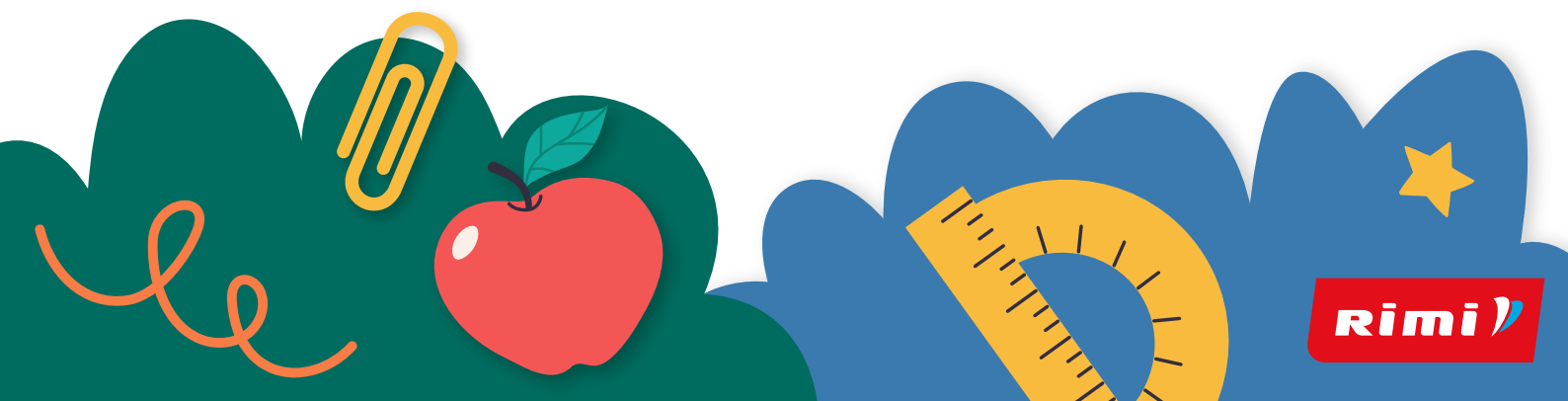
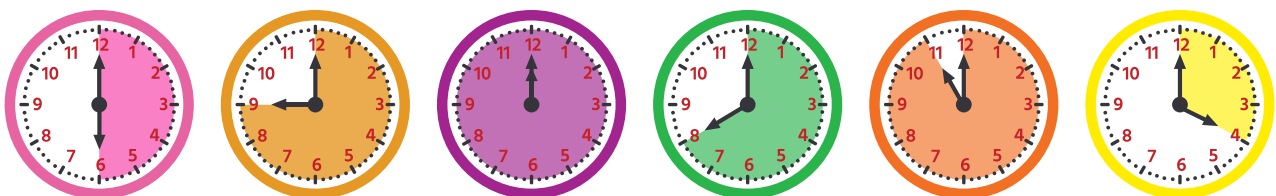
**1+9** 0+5 4+4 6+4  
1+5 4+7 4+5 6+4  
0+10 2+5 2+4 8+2 5+7  
9+3 7+3 2+8 9+1 1+4  
1+4 3+7 6+4 3+4 9+3  
8+2 3+5 10+0 5+5 0+5  
5+5 2+4 0+5 4+4 1+5 9+2  
0+10



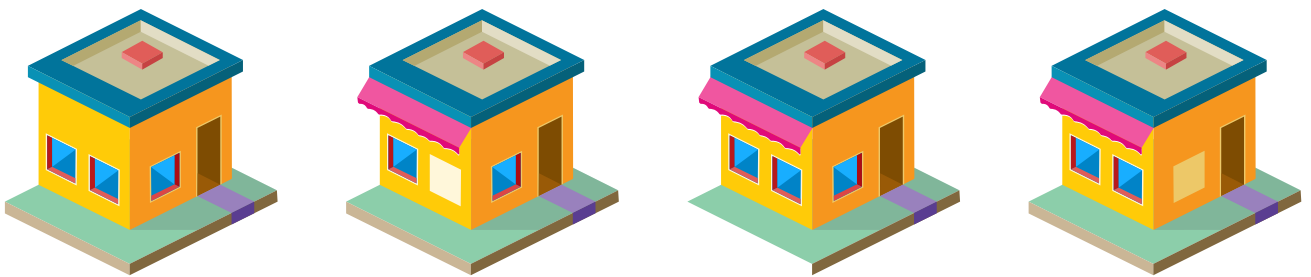
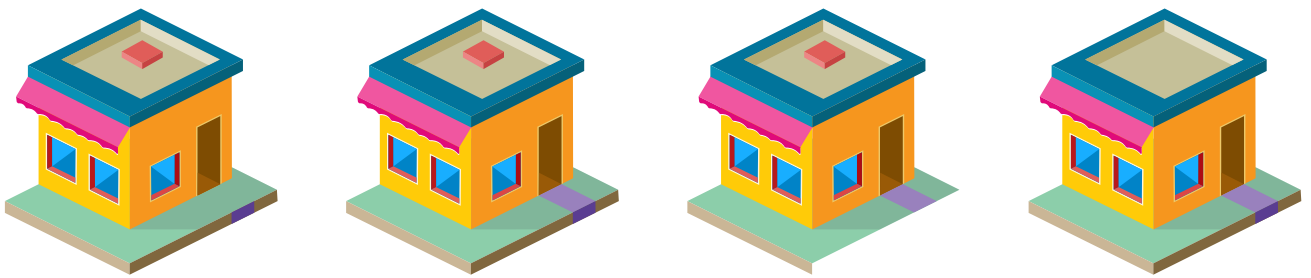
# Sujunk valandas su laikrodžiais



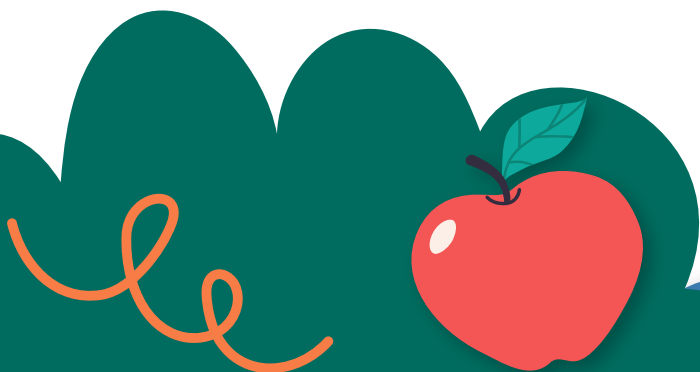
1 2 3 4 5 6 7 8 9 10 11 12



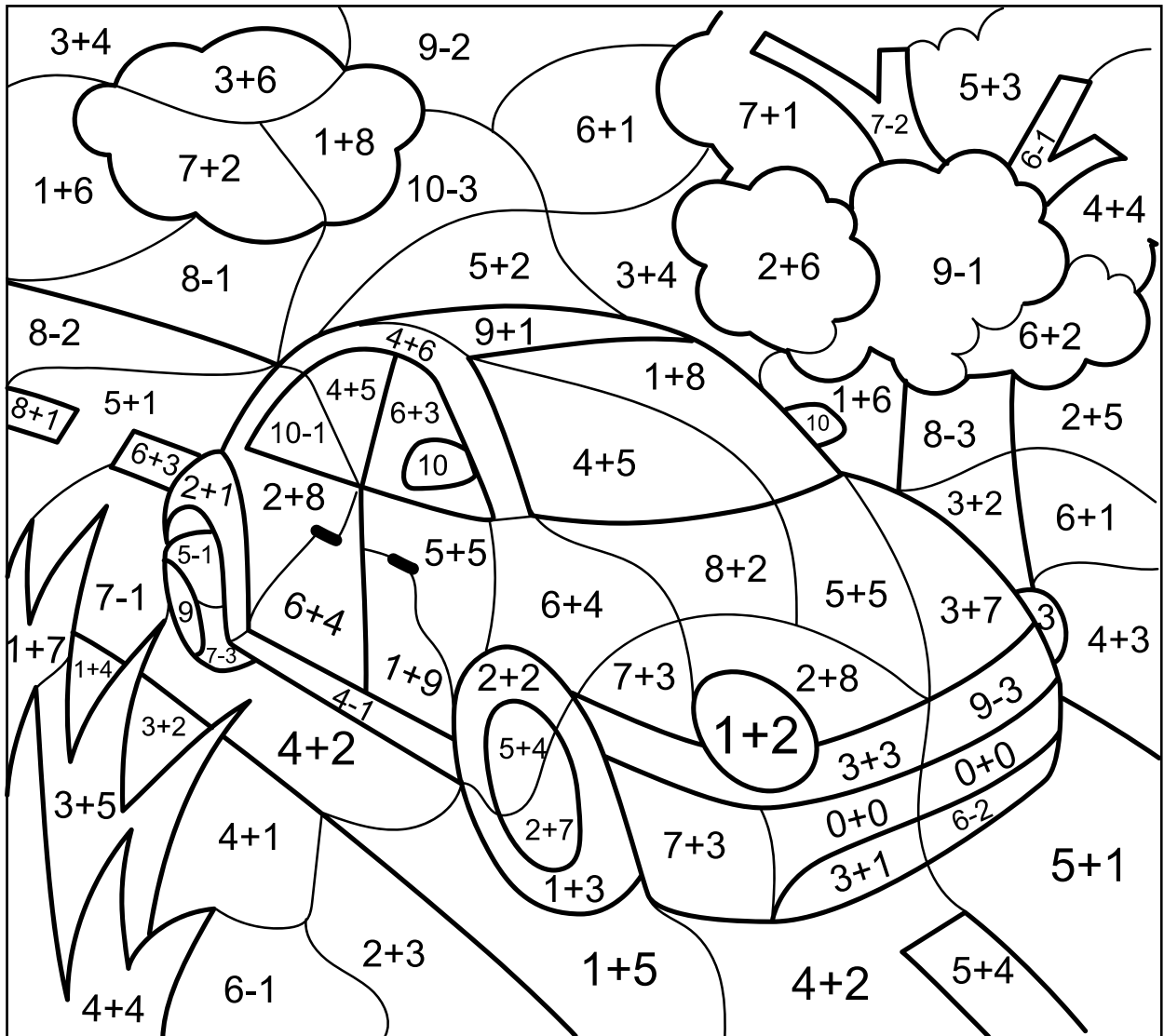
# Surask trūkstamas namo dalis



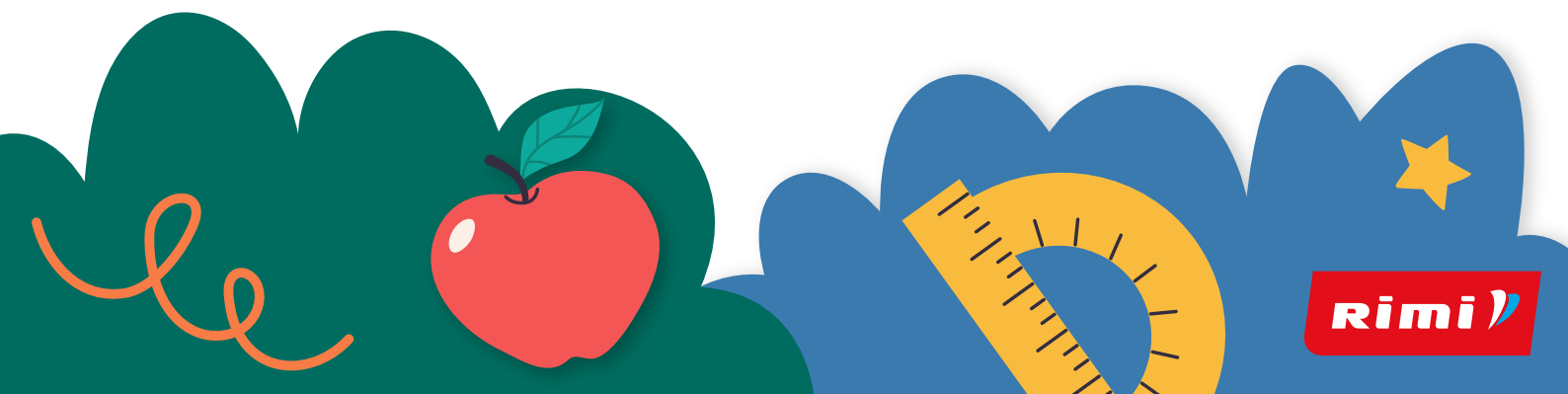
# Padēk piratams surasti lobj



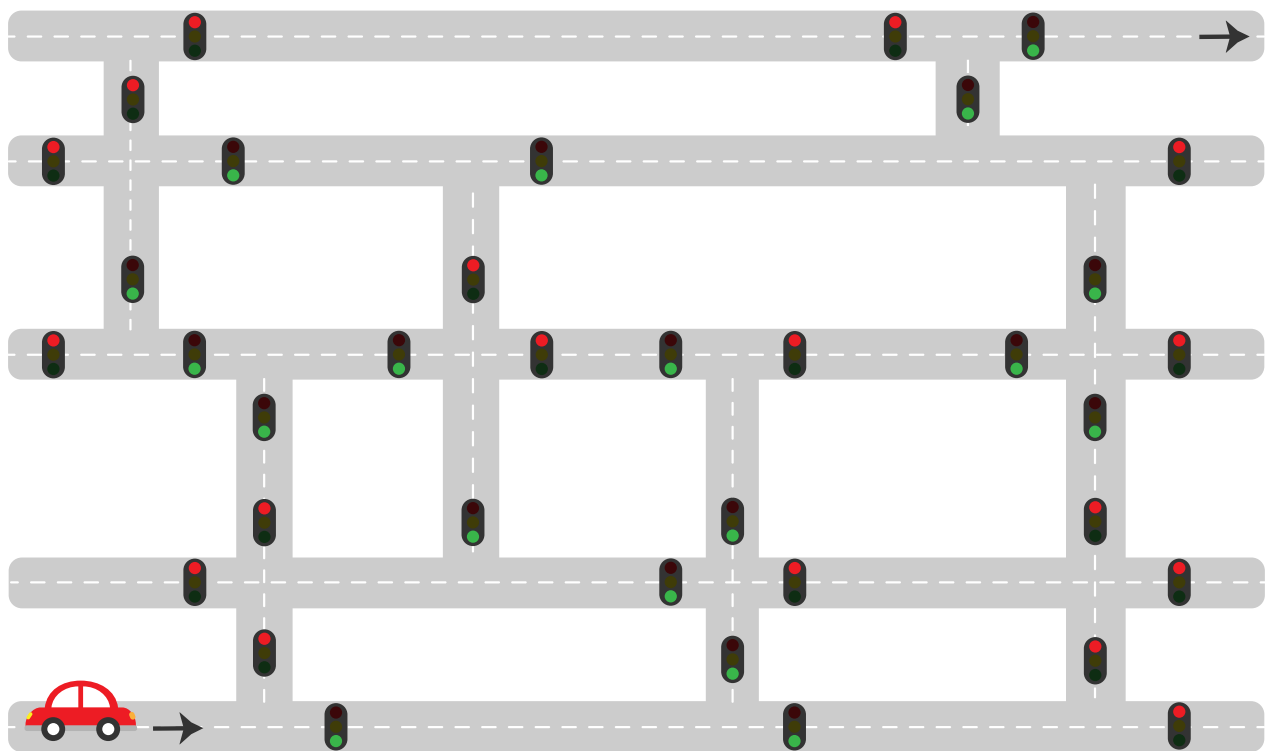
# Suskaičiuok ir nuspalvink



- 3 =  4 =  5 =  6 = 
- 7 =  8 =  9 =  10 = 



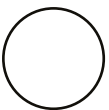
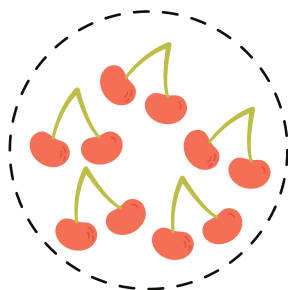
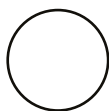
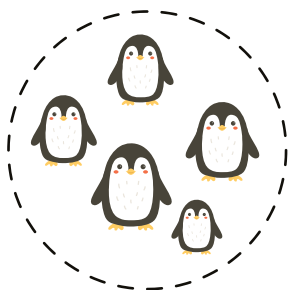
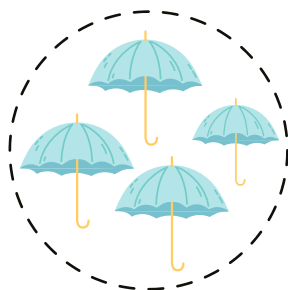
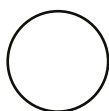
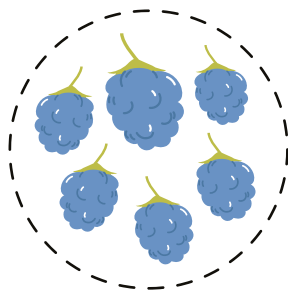
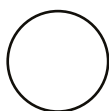
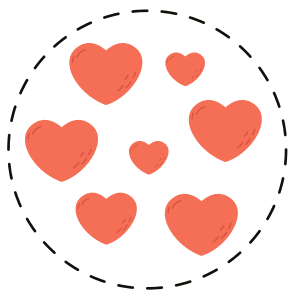
# Padėk mašinytei nuvažiuoti per žalią šviesą



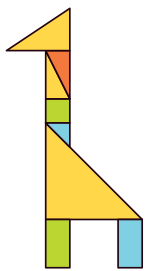


# Daugiau, mažiau arba lygu

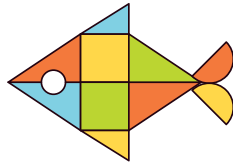
> < =



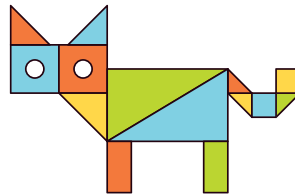
# Iš kokių dalių sudėta kiekviena figūrėlė?



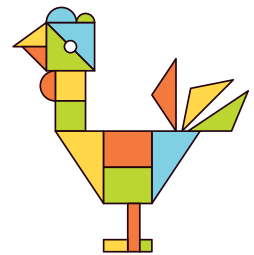
a



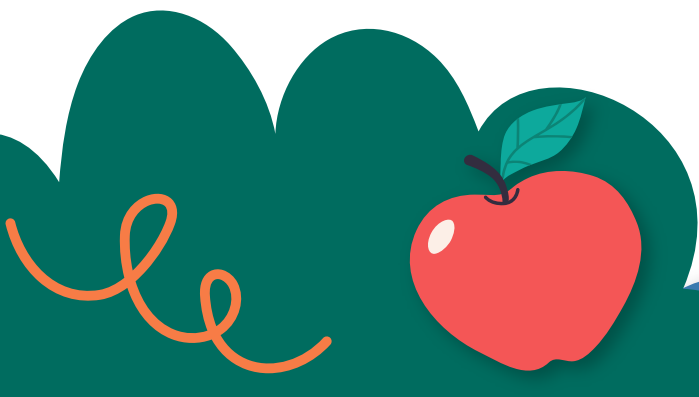
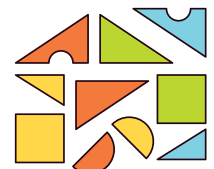
b



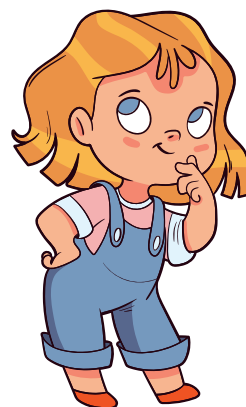
c













d



# Padėk mergaitei suskaičiuoti pieštukus



# Surask 10 pasislėpusių gyvūnelių

- 1 
- 2 
- 3 
- 4 
- 5 
- 6 
- 7 
- 8 
- 9 
- 10 



# Atlik atimties veiksmus

$6 - 3 = \square$

$8 - 5 = \square$

$7 - 1 = \square$

$3 - 1 = \square$

$9 - 1 = \square$

$4 - 3 = \square$

$7 - 2 = \square$

$4 - 4 = \square$

$9 - 8 = \square$

$8 - 4 = \square$

$6 - 5 = \square$

$1 - 0 = \square$

$1 - 1 = \square$

$7 - 3 = \square$

$6 - 5 = \square$

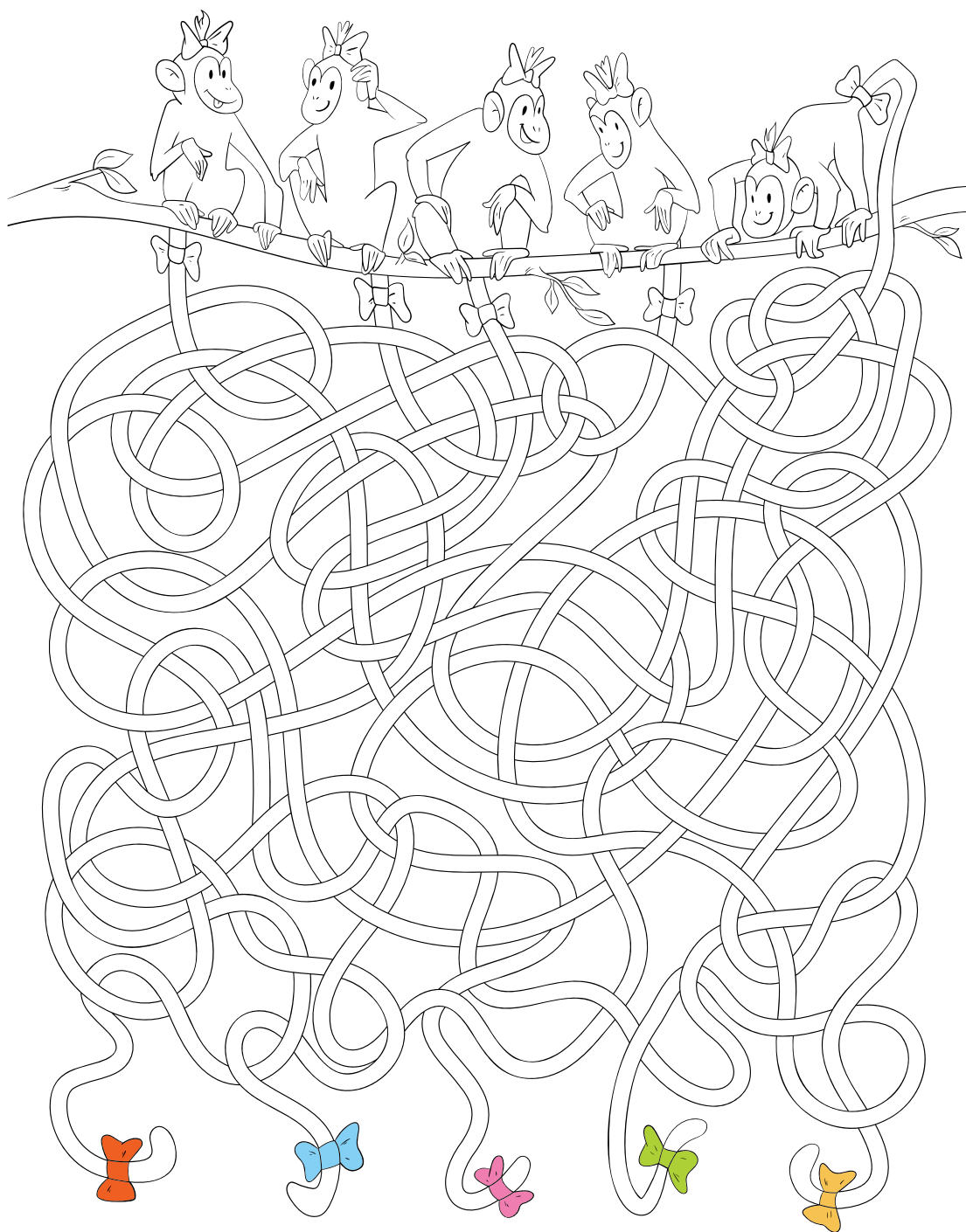
$3 - 0 = \square$

$2 - 1 = \square$

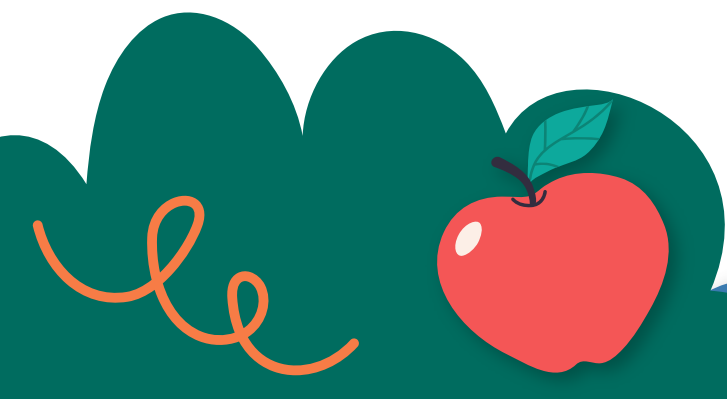
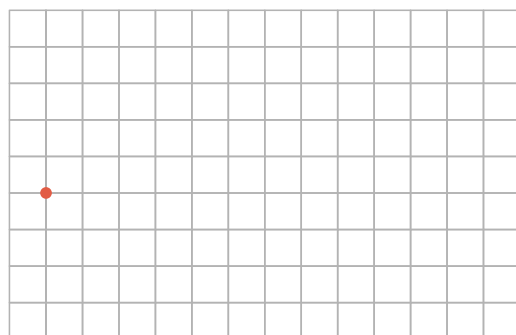
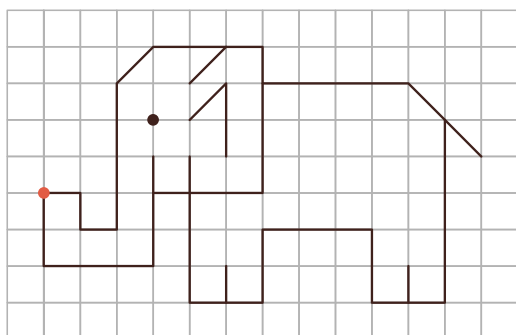
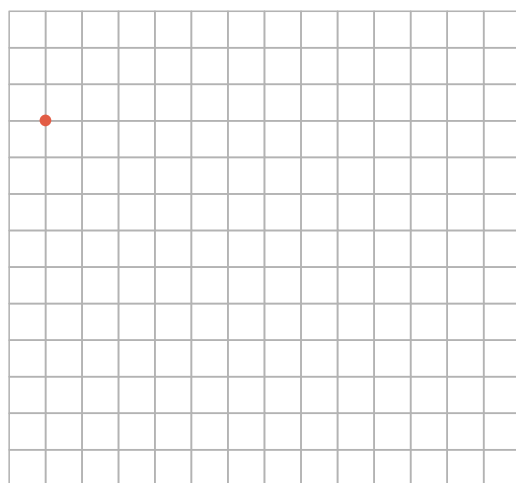
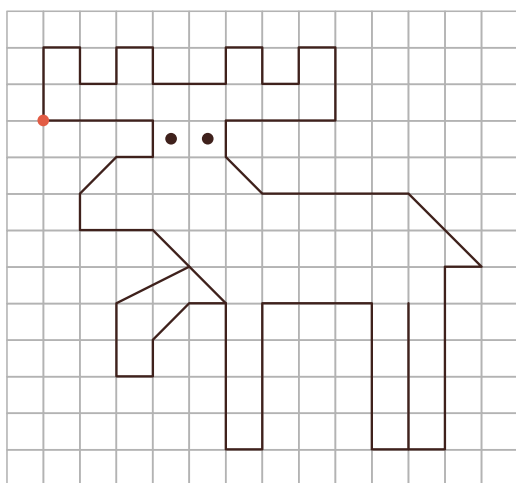
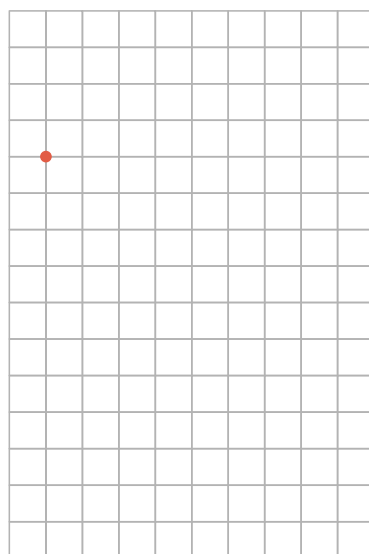
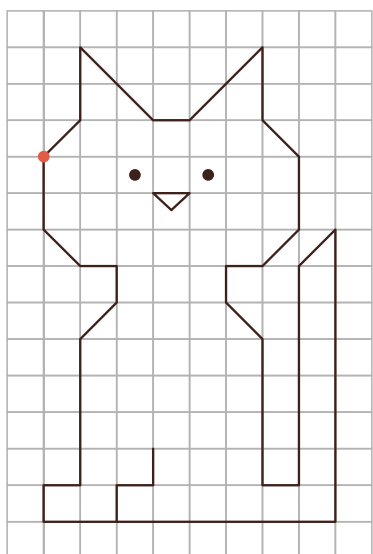
$4 - 2 = \square$



# Surask kelią ir nuspalvink

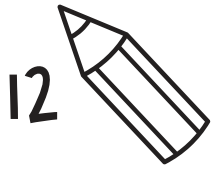


# Atkartok piešinī



# Atsakymai

11 puslapis



12 puslapis

